



Seamless Expansion Joint Adhesive

tst 无缝伸缩缝胶



无缝伸缩缝胶是一种填充沥青的桥梁伸缩缝。其基本方法是用一种特殊的高弹性沥青混合料代替桥接缝上方狭窄范围的桥面铺装。这种高弹性的特殊沥青和石料混合料可以吸收桥面因温度和交通荷载而产生的位移，并确保表层不会开裂和损坏。

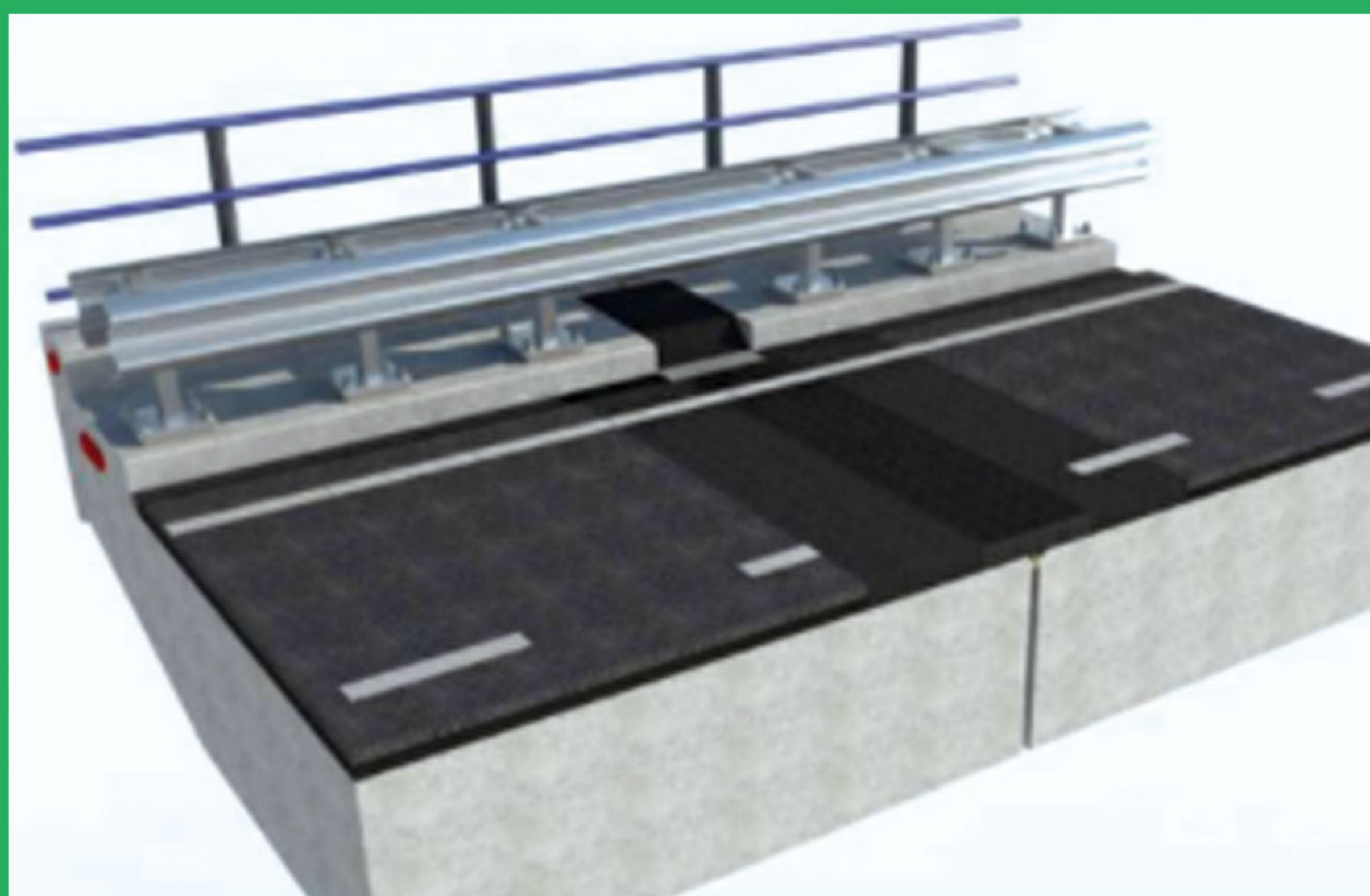
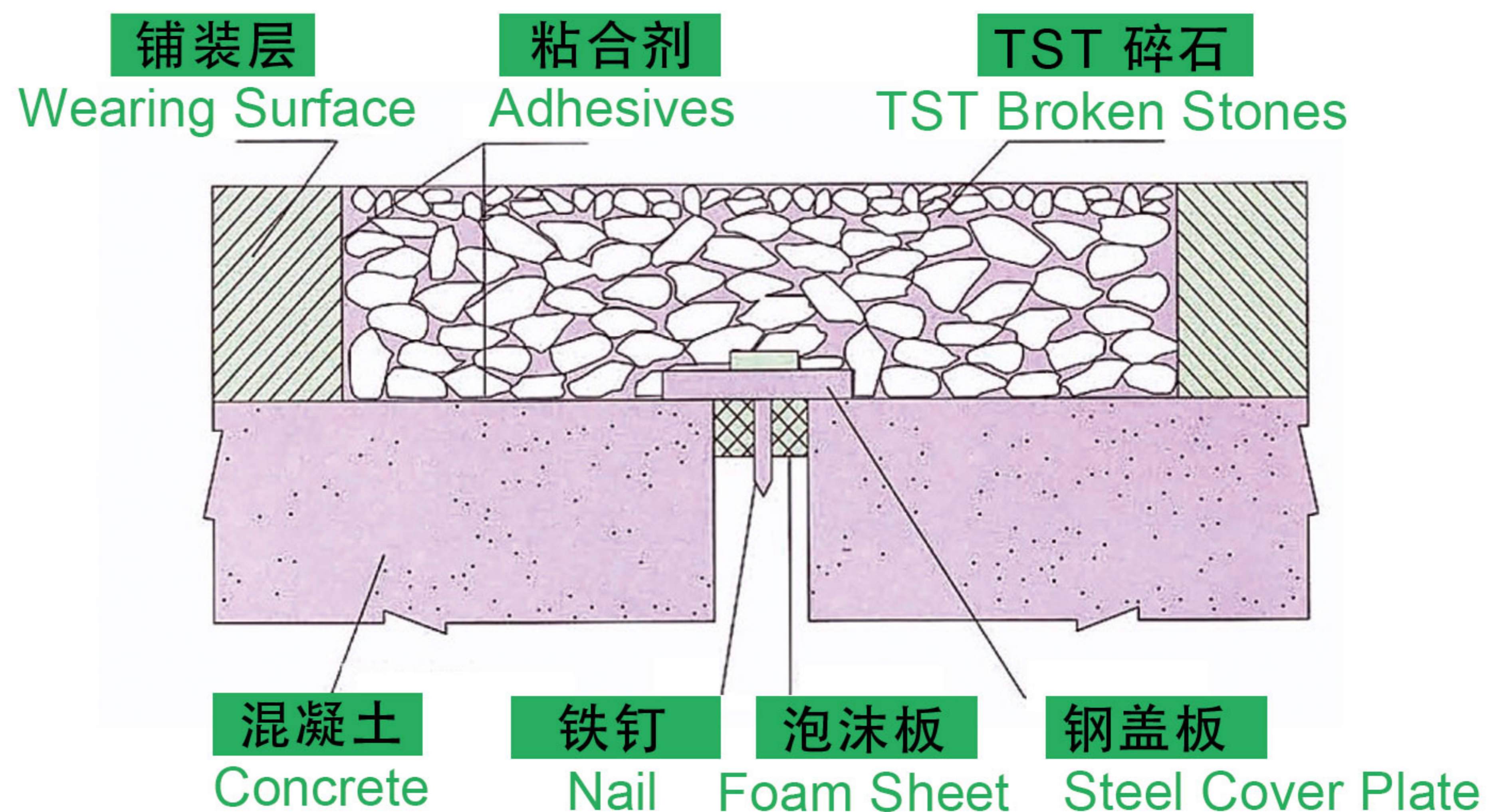
Seamless expansion joint adhesive is a kind of asphalt-filled bridge expansion joint. Its basic method is to replace a narrow range of bridge deck pavement above the bridge joint with a special high-elastic asphalt mixture. This highly elastic special asphalt and stone mixture can absorb the displacement of the bridge deck due to temperature and traffic load, and ensure that the surface layer will not be cracked and damaged.



结构组成： Structure and Composition

该装置由支撑钢板、高弹性粘结材料、单级碎石骨料和填料四部分组成。

The device is composed of four elements: supporting steel plate, high elastic bonding material, single-stage crushed stone aggregate and stuffing material.

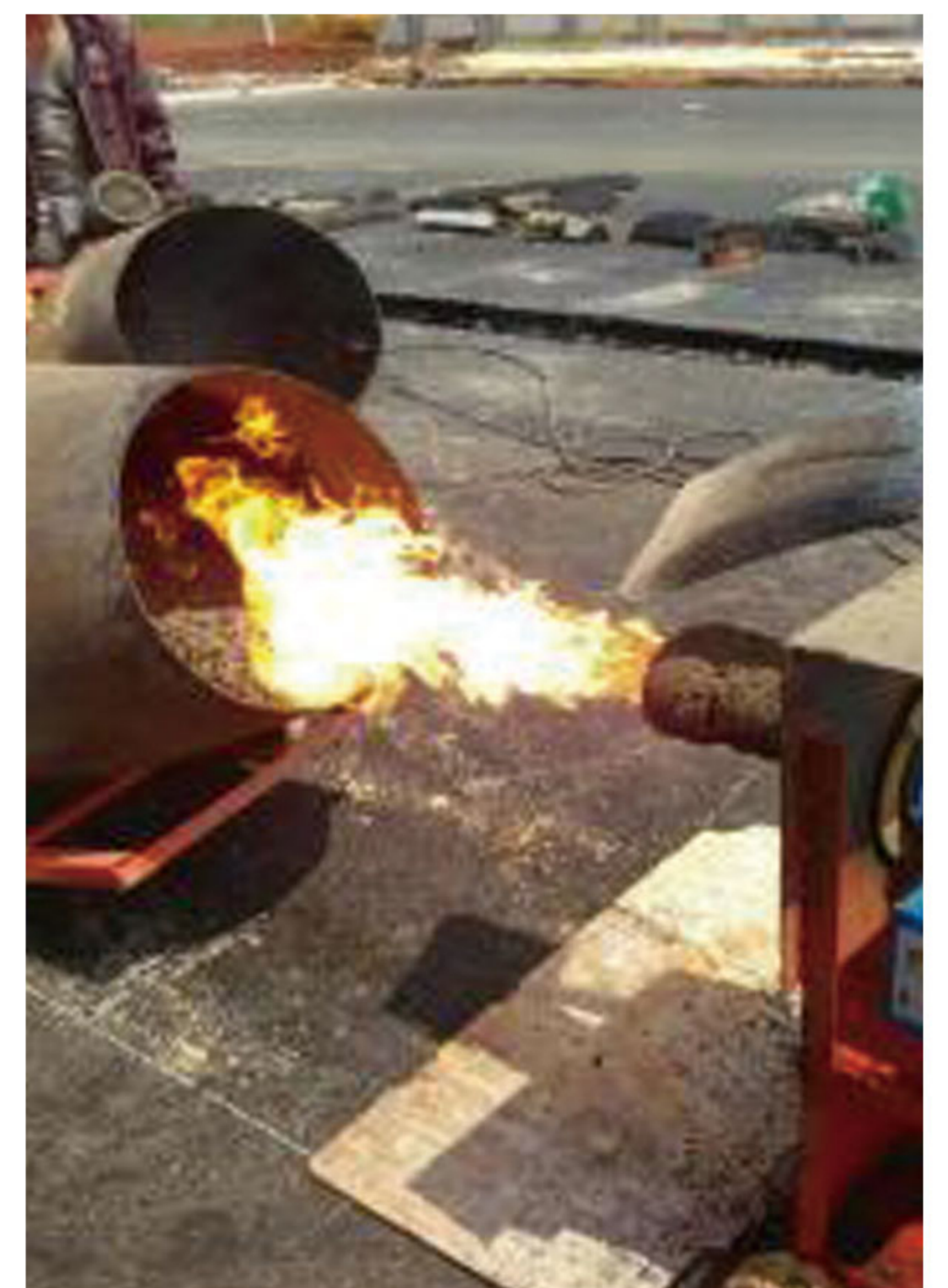


无缝拉伸胶可以同时兼顾高温和低温、渗透性和粘度的相反性能要求。不仅适用于温度单一的地区，也适用于温差较大的地区。

The seamless stretch adhesive can take into account the opposing performance requirements of high temperature and low temperature, permeability and viscosity at the same time. It is not only suitable for areas with a single temperature, but also for areas with large temperature differences.

从力学上看，填充材料在承受瞬时载荷和高频振动时充分表现出弹性，在低频慢力作用下充分表现出塑性。

From a mechanical point of view, the filling material fully exhibits elasticity when subjected to instantaneous load and high-frequency vibration, and fully exhibits plasticity under the action of low-frequency slow force.



TST 桥梁伸缩的弹性恢复力非常高。

The elastic recovery force of TST bridge expansion and contraction is very high.



材料的技术指标： Technical indicators of materials

项目 Project	试验方法 Experiment Method	标准 Standard
针入度 Penetration	ASTM D1190	<17 dmm
软化点 Softening Point	ASTM D36	>90 °C
流值 Flow Value	ASTM D1190	<3 mm
比重 Proportion	ASTM D70	>1.25
弹性复原率 Elastic Recovery Rate	25°C	>60%
弹性复原率 Elastic Recovery Rate	-10°C	>60%

车轮经过时，桥架振动为高频振动，弹性体呈现弹性。

when the wheels pass by, the bridge vibration is high-frequency vibration, and the elastic body shows elasticity.

温度变化时，桥收缩，属于低频慢力，弹塑性体表现出完全的可塑性。

when the temperature changes, the bridge shrinks, it belongs to low-frequency slow force, and the elastic-plastic body shows completely plasticity.



施工方便灵活：一支技术精湛的施工队伍（8-10人）每天可延长30米伸缩缝，可进行半幅施工，不阻塞交通。

Convenient and flexible construction: a skilled construction team (8-10 people) can extend expansion joints of 30 meters per day, and can perform half-width construction without blocking traffic.





高温附着力好 Good High Temperature Adhesion

1

施工时能与现有路面牢固粘合，常温下完全不粘，冷却后不会被粘带带走。
It can be firmly bonded to the existing road surface during construction, and it will not stick at all at room temperature, and will not be taken away by the stick after cooling.

使用寿命长 Long Service Life

2

严格按照工艺要求安装的无缝伸缩缝胶，使用寿命是一般改性沥青路面的 2 倍左右。

The seamless expansion joint adhesive installed in strict accordance with the process requirements has a service life about twice that of the general modified asphalt pavement.

快速通车 Open To Traffic Quickly

3

无缝伸缩缝胶安装后 2 小时即可通车，如喷水加速降温，1 小时后可通车。

The seamless expansion joint adhesive can be opened for traffic two hours after installation, if the water is sprayed to accelerate the cooling, the traffic can be opened after one hour

舒适性非常好：无缝伸缩缝粘接材料能充分吸收车辆的振动和冲击，车辆舒适平稳。

The Comfort Is Very Good: the seamless expansion joint bonding material can fully absorb the vibration and impact of the vehicle, and the vehicle is comfortable and stable.

